



WORTHY PLAN EMPOWERMENT INITIATIVE (WPEI)  
ORGANIZATIONAL PROFILE

# WORTHY PLAN EMPOWERMENT INITIATIVE (WPEI)

## ORGANIZATIONAL PROFILE

### **HEAD OFFICE**

Block 2, Flat 4, Ogoja Close off Oyo Street, Section 1, Area 2, Garki Abuja

### **BRANCH OFFICE**

No 15, Yobe Street, Behind Todays Store, Gidan Madara, Maiduguri, Borno State

### **BRANCH OFFICE**

No 22, New Bra Bra Estate, Opposite NCCF House, Damaturu, Yobe State

### **BRANCH OFFICE**

No 89, Opposite Water Board, IBB Way, Katsina State





## ABOUT WORTHY PLAN

### VISION

Is to make possible a future where poverty and health crises no longer exist, every person's dignity is respected and protected, and vulnerable groups and their caregivers, who are cared for, developed, and empowered.



### MISSION

Is to provide assistance and improve the quality of life of vulnerable populations, including children, Women, girls, the elderly, communities and their social welfare, through health services, human development interventions.



## CORE VALUES

### RESPECT

We are committed to treat people we serve with dignity and to listen to them for solutions that work for them.

### ACCOUNTABILITY

We are committed to being responsible and transparent in all our activities.

### NONPARTISAN

We believe in serving all who are in need with impartiality and in an equitable manner.

### ADVOCACY

We seek to ensure that the most vulnerable people in our society are able to take part in decisions that affect their lives.

### QUALITY

We strive to meet our Objectives, serve our Beneficiaries and satisfy Expectations of all Stakeholders to the best of our ability.

### INNOVATION

We are learning organization dedicated to seeking appropriate and effective intervention for health, poverty and enhancing the standard of living.





**WORTHY PLAN EMPOWERMENT INITIATIVE (WPEI)  
ORGANIZATIONAL PROFILE**

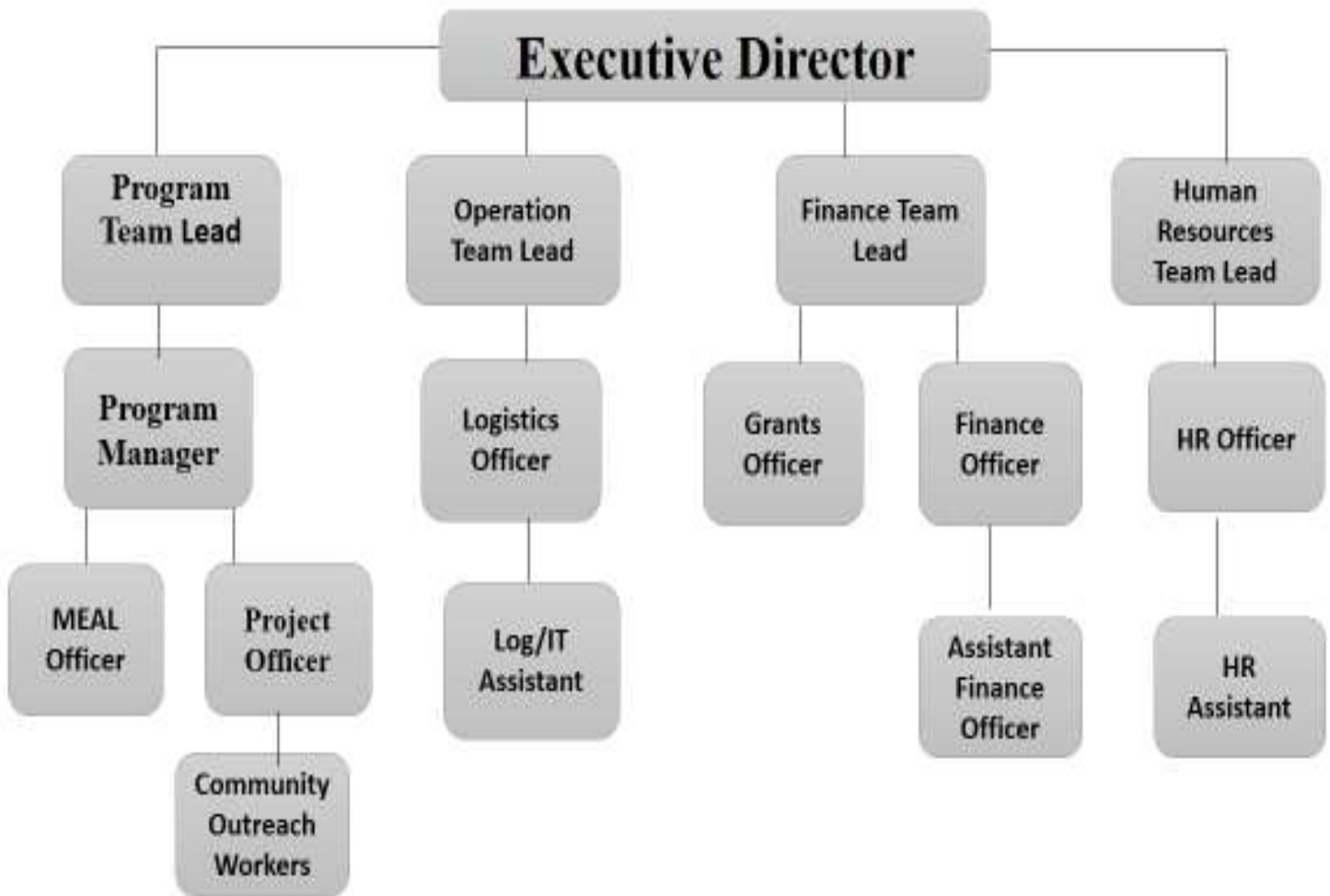
**LOGO**





# WORTHY PLAN EMPOWERMENT INITIATIVE (WPEI) ORGANIZATIONAL PROFILE

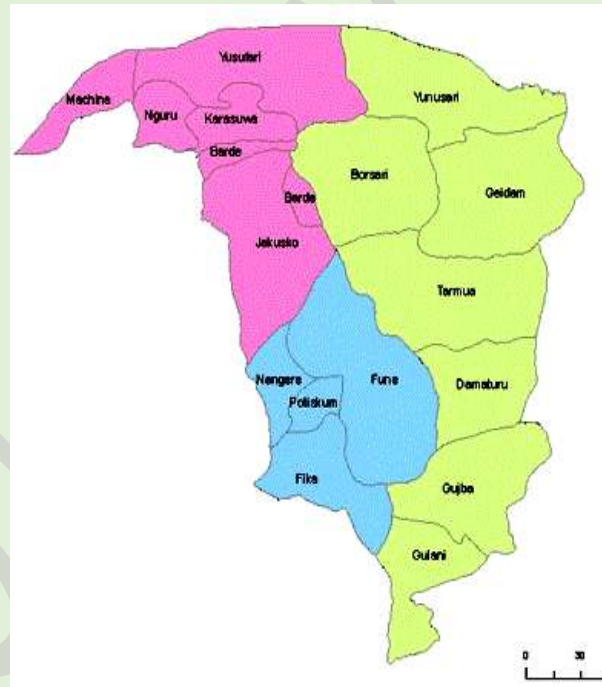
## Organizational Structure/ Project Team Hierarchy





# WORTHY PLAN EMPOWERMENT INITIATIVE (WPEI) ORGANIZATIONAL PROFILE

## THE AREAS WE WORK IN



- ✓ BORNO STATE
- ✓ YOBE STATE
- ✓ ABUJA-FCT
- ✓ KATSINA STATE



## WORTHY PLAN EMPOWERMENT INITIATIVE (WPEI) ORGANIZATIONAL PROFILE

# CONTENT

- ✓ ABOUT WORTHY PLAN
- ✓ LOGO
- ✓ ORGANIZATION STRUCTURE
- ✓ THE AREA WE WORK IN
- ✓ STRATEGIC AREAS
- ✓ MESSAGE FROM COUNTRY DIRECTOR
- ✓ BACKGROUND AND HISTORY
- ✓ HISTORICAL TIMELINE
- ✓ 2023-2028 STRATEGIC PLAN FORGING AHEAD
- ✓ EDUCATION
- ✓ HEALTH & NUTRITION
- ✓ WATER, SANITATION AND HYGIENE (W.A.S.H)
- ✓ RESILIENCE, FOOD SECURITY, ECONOMIC DEVELOPMENT AND LIVELIHOODS
- ✓ SOCIAL SERVICES & PROTECTION
- ✓ SUPPORT TO WOMEN, CHILDREN & GIRLS
- ✓ PEACE BUILDING & GOVERNANCE
- ✓ MENTAL HEALTH AND PSYCHOSIAL SUPPORT



**WORTHY PLAN EMPOWERMENT INITIATIVE (WPEI)  
ORGANIZATIONAL PROFILE**

DO NOT COPY

# STRATEGIC AREAS



**EDUCATION  
AND SOCIAL  
DEVELOPMENT**



**HEALTH & NUTRITION,  
WATER ,SANITATION AND  
HYGIENE**

**LIVELIHOOD,  
RESILIENCE,  
ECONOMIC  
DEVELOPMENT  
AND EMERGENCY**



**PEACE-BUILDING  
AND GOVERNANCE**





## WORTHY PLAN EMPOWERMENT INITIATIVE (WPEI) ORGANIZATIONAL PROFILE



# KINGSLEY ONYINYECHI

## EXECUTIVE DIRECTOR, WORTHY PLAN

### MESSAGE FROM THE EXECUTIVE DIRECTOR

**At this strategic period, we are focusing on self-sufficiency.**

I am pleased to have this opportunity to express my deep gratitude to the Board of Trustees, our partners and supporters, field workers, management staff and volunteers for the successful accomplishments of emergency, humanitarian services and development work for the Northwest and Northeast people and Nigeria at large,.

Worthy Plan Empowerment Initiative is at a significant crossroad. In the process of developing our strategic plan for the next four years (2023-2027), we have had the chance to look back and reflect on the work that we accomplished since the founding of our organization about 7 years ago. Worthy Plan Empowerment Initiative was existing since 2017 but was incorporated on the 29<sup>th</sup> of April 2022 with Nigerian government through Corporate Affairs Commission (CAC/IT NO: 179406). in response to the devastating insurgency wars that resulted from the emergence of Boko Haram in Northeast in 2015 and our plan to expand to Katrina State and Northwest to mitigate effects and trauma of the insecurity issues in Northwest region of Nigeria since 2021 to date as it affect Health and Nutrition services combined with a severe drought and diseases which claimed hundreds of thousands of lives. Millions more are at risk of perishing from man-made disasters and environmental catastrophes, and the terrible effects are unfortunately still being felt seven years later as new challenges arise every day.

We would like to thank Worthy Plan Empowerment Initiative board, & staff, community members, partners and funders for participating in and supporting our journey in service for the vulnerable people of Northeast and we need you more now as we expand to Katsina State of Northwest Nigeria. Worthy Plan Empowerment Initiative looks forward to the next five years as we implement our Strategic Plan 2024. With your help we are confident that we will be successful in our mission and continue to be an organization that we can each take pride in.

At this strategic period, we are focusing our energies on further developing the innovative and sustainable solutions that we initiated seven years ago. While always ready with health and nutrition services and emergency relief, Worthy Plan had transitioned to social and infrastructure recovery and rebuilding. In the next five years (2023-2028) Worthy Plan will focus on Health and Nutrition services, re-development and healthcare services, safe water and sanitation, I call upon our partners, donors, supporters and well-wishers to join us in moving forward with our vision to bring more people out of health and nutrition issues, assist them regain their dignity and into self-sufficiency



# **BACKGROUND AND HISTORY**

Worthy Plan Empowerment Initiative is a non-governmental, non-profit development organization founded in Abuja in 2019 with a mission to provide vulnerable groups, people affected by human and natural crises with emergency relief, educational programs, clean water and food security, healthcare, protection for children, sustainable socio-economic programs, and to promote peace-building and effective governance, while integrating our values of respect, impartiality, quality, accountability, advocacy and innovation in all our work. We have since grown among the national humanitarian and developmental organizations in Nigeria with almost seven years of experience providing relief and socio-economic support services to those most affected by the joint forces of conflict, economic collapse and recurrent climatic shocks. Our organization's headquarters is in Abuja with branch offices in Maiduguri, Katsina, and field operation offices across Katsina and Borno states in the Northwest and Northeast, and across the country.

Even as Nigeria is witnessing a rebirth in development, reconstruction and peace-building, recurrent climatic shocks (droughts and flooding) and protracted insurgency have left the Nigerian people and society in dire need of humanitarian assistance at all levels. Decades of political instability have left vast populations, especially in rural areas, living in extreme poverty with high morbidity and mortality rates. The demand for basic necessities for survival are very high.

The need for emergency survival support and sustainable social and infrastructure development has never been greater and is crucial to ensure the survival of Nigeria and prevention of future conflict.

Our programs are focused on serving the most vulnerable and marginalized people in Borno, Katsina states in Northwest and Northeast, and across the country. Particularly children, adolescent boys and girls, women, youth, the elderly and persons with disabilities, people from minority clans and other marginalized groups and internally displaced persons (IDPs). The sectors we work in are humanitarian relief, health care, water and sanitation, and education.

Worthy Plan Empowerment Initiative is certified and has membership in various National humanitarian consortiums and networks. It also has consultative status with other Organizations and Nigerian Humanitarian Fund office for the coordination of humanitarian action





# **HISTORICAL**

## **TIMELINE**

Worthy Plan Empowerment Initiative is established against a backdrop of turmoil, crumbling state institutions and crippled social services as Nigeria slides into instability. A severe drought ravages the country and gunfire rocks the communities and millions of Nigeria fall victim to the natural disaster and violence. Starvation, illness and death of thousands of people leads to a United Nations intervention mission. As hundreds of intellectuals, business people and wealthy Nigerians flee their communities and country, the most vulnerable are left behind without any safety net.

We are among the first responders to the deepening humanitarian crisis, stepping in to provide crucial food, water and healthcare aid for thousands of conflict and famine victims in our operational service areas. We organize medical intervention through roving responses and missions carrying critical medical support to the countryside and remote villages.

Our focus is on humanitarian relief, establishment and provision of critically needed social support services following the collapse of some Nigeria's public institution presence in rural communities. In response to rising unemployment, we establish friendly relationship with our beneficiaries, setting up workshops that accommodate workers who lost their jobs at the national and local. Worthy Plan also plays a major role in the establishment of a vocational training center for women that is run by the women's development organization,

We focus on health, nutrition and education which is core pillars of Worthy Plan Empowerment Initiative's activities. We begin by providing health services and establishing programs for primary and secondary schools in different regions of Nigeria. The importance of education in Nigeria cannot be over-emphasized. Several years after the collapse of the public education system, young Nigerians are staring hopelessly into a bleak future punctuated by illiteracy, poverty and stagnation. Worthy Plan sets out to change this scenario by setting up Impactful learning programs and supporting schools in Northeast Nigeria,

BAY States, Borno, Adamawa, and Yobe states, and Katsina state in the Northwest. We also celebrate our 6th anniversary by developing a long-term strategic work plan that will have a lasting impact on the lives of Northeast and Northwest and Nigeria people. We are committed to the development of stronger, community-based healthcare.

With help from our local and international partnerships, we establish projects such as the E-learning programs. The organization becomes well-known for its strategically-located and life-saving boreholes and artesian wells that facilitate the availability of safe and clean water to communities in need across BAY state. Worthy Plan emerges as one of the most successful pioneering service organizations and becomes the largest and fastest growing national humanitarian and developmental organization in Nigeria, reaching millions of people through its varied sectors each year.

We embark on institutional development and system strengthening. This is a significant milestone in our journey; we have accumulated a wealth of practical experience and renew our vision and



## WORTHY PLAN EMPOWERMENT INITIATIVE (WPEI) ORGANIZATIONAL PROFILE



2022

commitment to a career in humanitarian service and development. Our organization is a trailblazer in the establishment of transparency and effectiveness in humanitarian service delivery to vulnerable and destitute people in Northeast and Northwest Nigeria. This raises our profile in regional and national humanitarian platforms and makes us a reference point for those interested in humanitarian work in the region. We strengthen our internal systems through the development of appropriate policies and procedures. Worthy Plan Empowerment Initiative becomes an active member in a number of national humanitarian platforms with increasing participation in national humanitarian conferences. The organization has been the recipient of Excellence in Volunteering successes and awards, including Award for Volunteerism.

Seven years into our work, we focus on sustainability and community development. With a clear vision and an acute awareness of the real needs of real people gained after many years, we embark on the development of targeted projects which help people while enabling them to become active agents of change in their own lives and communities. We believe that real community development occurs when the people who live in it are involved and leading it.



We continue investing in people through training and support for farmers, small and medium-sized entrepreneurs, youth, women and other marginalized communities. We also focus on institutional strengthening through strategic planning, staff development and streamlining of programming.



# **2023-2028 STRATEGIC PLAN**

## **FORGING AHEAD**

Worthy Plan Empowerment commissions a strategic plan to guide the organization on strategic objectives for the next five years. The strategic plan will guide and inform our development and funding partners, investors, beneficiaries and other stakeholders of the work we are doing and foster strong linkages and partnerships with them to achieve maximum results and impact. It will also set out a clear framework for accountability, mechanisms of achieving the stated objectives as well as ensuring that sustainable impact of our programs will be measured, critiqued and/or appreciated.

DO NOT COPY



# 1

## Education

Education is the cornerstone of any nation. Challenges confronting the education sector are the direct consequence of protracted emergencies over the past seven years stemming from conflict, drought and flooding. Together, the multi-pronged emergencies have had a significant impact on the education systems and on the lives of children and youth in Northwest and Northeast Nigeria. The challenges facing the sector are daunting, including lack of access and widespread inequity. In addition, the education provision is of low quality, mainly due to the high number of unqualified and untrained teachers, multiple curricula, poor education infrastructure and weak capacity for service delivery.





## WORTHY PLAN EMPOWERMENT INITIATIVE (WPEI) ORGANIZATIONAL PROFILE

### **WORTHY PLAN Educational projects provide:**

Classroom furniture, school materials/learning packs and teaching assistance to schools that are not able to cover operational costs, Education intervention support for vulnerable children and conflict affected.

Worthy Plan Empowerment Initiative's work in the education field in Northeast and Nigeria has been ongoing for over six years. Grassroots, innovative and future-oriented, Worthy Plan is a pioneer in sustainable and impactful supportive programs to quality schools and infrastructure which contributes to an enhanced learning environment for students.

Worthy Plan Empowerment Initiative has achieved success over the years of existence in the humanitarian space, which it manages directly. Since 2017, about 15,000 students have benefited from these supportive and impactful programs to schools, receiving quality education and a chance to dream of a brighter future. Given the dire need for skilled workers at a time when the country is at the start of a significant rebuilding and redevelopment period, Worthy Plan Empowerment Initiative has highlighted the importance of technical and vocational training and has Successfully established and participating in Technical and Vocational Education (TVET) Training Institutes and one of entrepreneurship support organization in Northwest and Northeast and Nigeria.

### **Financial Assistance**

Is provided to students who need it to enable them to go through the education system without the risk of dropping out of school. A prime focus of the financial assistance are vulnerable children.

To inspire bright students to expand their horizons, Worthy Plan runs education/learning packages in Northwest and Northeast, and across BAY state which are granted annually and cover all expenses. Recipients of these programs have success stories and returned to their schools better and contributing actively to the development of their communities.

Worthy Plan strategies are aligned with the Federal Government of Nigeria's Ministry of Education, Culture and Higher Education Sector Strategic Plan (2023-2028), which outlines its priorities to increase access to quality education for children and equip youth with the skills and knowledge needed to contribute to the social, political and economic development of Nigeria.



**WORTHY PLAN EMPOWERMENT INITIATIVE (WPEI)  
ORGANIZATIONAL PROFILE**

**THE NEXT 5 YEARS, WORTHY PLAN  
EMPOWERMENT INITIATIVE  
WILL IMPROVE ON THE FOLLOWING AREA:**

- Create self-sufficient programs
- Improve on quality education - primary, secondary and tertiary Institutions
- Invest in relevant vocational training skills
- Provide support to school talent management – for students in fields such as innovation, arts and culture
- Create an endowment portfolio for the education sector to increase income generating activities for sustainability
- Mobilize resources from private sector, international NGOs and diaspora/individual donors
- Enhance the social welfare program





# 2

## HEALTH & NUTRITION

**And/or malnutrition) from both man-made and natural disaster severely affected.**

Public health in Nigeria, and Northwest and Northeast has been impacted directly (civil unrest and violence) and indirectly (diseases and malnutrition) from both man-made and natural disasters, most actually from the collapse of some health centers because of insurgency back from year 2015. Most susceptible to the constant threat of concurrent droughts, food insecurity and civil unrest have been the most vulnerable in the society, namely women, children, girls, old people and people living in poverty. Malnutrition in Northwest and Northeast Nigeria is at a crisis level, and it has been projected by the food and Agriculture Organization (FAO) that over 900,000 children were face with acute malnourishment in 2022, a quarter of them likely to be severely affected.

For over six years, Worthy Plan Empowerment Initiative has worked to improve the health of vulnerable populations in Northwest and Northeast, and other parts of Nigeria through the establishment of partnerships with local health facilities, providing sustainable health and nutrition services, increasing access to basic health services amongst the poor and saving lives through provision of emergency medical services.

Worthy Plan Empowerment Initiative was instrumental in the establishment of success stories in health facilities in Northwest and Northeast, and in Nigeria at large.





## WORTHY PLAN EMPOWERMENT INITIATIVE (WPEI) ORGANIZATIONAL PROFILE

Worthy Plan Empowerment Initiative has also placed urgent emphasis on the importance of maternal healthcare and has included a major Obstetrics and Gynecology unit within health facilities. Integrated Maternal and Child Health Care and Nutrition Services Provision facilities set up by Worthy Plan in various communities across Northwest and Northeast Nigeria continue to act as primary points of assistance for women with children in the hopes of reducing the mortality rate for mothers and children under five years of age.





**WORTHY PLAN EMPOWERMENT INITIATIVE (WPEI)  
ORGANIZATIONAL PROFILE**

**IN THE NEXT 5 YEARS, WORTHY PLAN  
EMPOWERMENT INITIATIVE  
WILL IMPROVE IN THE FOLLOWING AREA:**

- Expansion of the program into different region in Nigeria
- Improve the gap in funding/sustainability
- Investment in health infrastructure such as equipment
- Recruitment of staff such as nurses
- Improvement on organizational capacity such as sanitation and hygiene programs
- Improve emergency responses to health issues and the organizational response to these emergencies
- Improve information management of health sector

Lack of adequate health care combined with limited access to water are key issues associated with high incidences of malnutrition and outbreaks of waterborne diseases which claim hundreds of Nigerians lives annually.

Only

**55%**

**NORTHWEST AND NORTHEAST HAVE ACCESS TO IMPROVED  
WATER SOURCES**



# 3

## WATER, SANITATION & HYGIENE (W.A.S.H)

Health, well-being and social development is closely tied to access to safe water, sanitation and hygiene. In the case of Nigeria, erratic rainfall, protracted conflict and lack of adequate water sources have created barriers to access.

Inadequate access to water, lack of sanitation and poor hygiene have helped to accelerate the increasing rate of diseases in Northwest and Northeast, in Katsina and Borno states and Nigeria. A strategic, comprehensive approach is required to set up a sustainable water availability system in order to meet the urgent needs of vulnerable populations that are already suffering from other challenges.

Worthy Plan has preached and supported safe water from its inception to save communities and their livestock in various region of the country.

A healthy population contribute to economic development through increased productivity and lengthened working life. It also reduces expenditure on the already stretched resources spent curbing the outbreaks of epidemics and diseases, Hence the justifications to invest is the resources in all interventions that are preventive in nature is the first step in guarantying a healthy and economically active population and labor force





## **WORTHY PLAN EMPOWERMENT INITIATIVE (WPEI) ORGANIZATIONAL PROFILE**

In most communities, the water quality is compromised by the absence of governance structures at the community level to ensure that the water sources are protected and managed in line with sound water management practices. The government officials also lack knowledge on how to support communities to adopt and stick to good attitudes and practices that impact on the quality of life.

A strategic, comprehensive approach is required to set up a sustainable water availability system in order to meet the urgent needs of vulnerable populations that are already suffering from other challenges. From the early stages of Worthy Plan Empowerment Initiative's existence, WASH has represented one of its core programs, designed to alleviate the need of communities through sustainable access to clean and safe water. Worthy Plan has emphasized investment in sustainable water sources, believing this to be a major solution for the recurrent droughts in Northwest and Northeast and Nigeria.

DO NOT COPY



# 4

## **ECONOMIC DEVELOPMENT AND SUSTAINABLE LIVELIHOOD**

The Northwest and Northeast communities largely dependent on agriculture, livestock and income from remittances. The food security situation has been deteriorating in many rural areas to recurrent droughts. Recurring and drastic climate changes and armed conflict in Northwest and Northeast, in Katsina, Borno state and Nigeria have led to the displacement of large populations and disruption of agriculture production as many farmers have been forced off their farms. This will ultimately result in low food production, escalating food prices and dropping of livestock prices resulting in rural unemployment. All these will have direct and indirect consequences for the households in the form of losing their livelihoods and being displaced.





## **WORTHY PLAN EMPOWERMENT INITIATIVE (WPEI) ORGANIZATIONAL PROFILE**

This sector is among the priority sectors for Worthy Plan Empowerment Initiative for the next five years. This is because the capabilities, assets, incomes and activities of people have a lot of implications on the income security, food security and resilience of the community, households and individuals. Supporting and encouraging the local production of food is the best type of help to achieve food aid, especially in situations of acute need among farmers, pastoralists and IDPs who have lost their crop or livestock due to insurgency, drought, floods and/or displacement. Worthy Plan Empowerment Initiative and its partners provide farmers with a generous supply of farm inputs like seeds, farm tools and heavy equipment support for land preparation and canalization. Farmers are also provided with continuous training. We are committed to the construction and rehabilitation of major irrigation systems to support farmers in Lower Katsina and Borno states, and Northwest and Northeast regions of Nigeria. Worthy Plan Empowerment Initiative provides income generation programs and re-stocking for disadvantaged populations and women-led families living in poverty. It is our firm belief that poverty can be ended through long-term and sustainable food security and economic growth programs. Thanks to our donors and partners with their generous support, Worthy Plan Empowerment Initiative has been able to reach thousands of families with livelihood interventions and income generating initiatives.

# 70%

**OF THE TOTAL POPULATION IN THE NORTHWEST AND NORTHEAST REGION ARE UNEMPLOYED ACCORDING TO NIGERIA HUMAN DEVELOPMENT REPORT**

Many social ills are also becoming more rampant, a consequence of having a large population of unemployed youth who constitute 70% of the total population according to NHDR - Nigeria Human Development Report. As far as addressing the issue of income security, Worthy Plan Empowerment Initiative will pay more attention to training the youth and equipping them with skills through technical and vocational education and training (TVET) so that they are equipped to start income generating activities at an individual and/or group level.



**WORTHY PLAN EMPOWERMENT INITIATIVE (WPEI)  
ORGANIZATIONAL PROFILE**

**IN THE NEXT 5 YEARS, WORTHY PLAN  
EMPOWERMENT INITIATIVE  
WILL IMPROVE ON THE FOLLOWING AREAS:**

- More strategic funding for the sector
- Contribute to youth empowerment/ employment
- More support in TVET and skills-building infrastructure
- promoting farming
- Support value chain related livestock, farming etc.
- promote Natural resource management

DO NOT COPY





# 5

## SOCIAL SERVICES & PROTECTION

The effect of drought, famine and armed conflict on children in Northwest and Northeast Nigeria, Katsina and Borno states have been devastating including the loss of many young lives, Northwest and Northeast children live with severe long-term effects on their development arising from psychological trauma and lack of proper nutrients at critical stages of their lives

Conflict have left many children in Northwest and Northeast Nigeria unprotected from their homes or deprived of their parents or both at same time, Whereas traditionally children would be cared for by other family members, this has not been the case due to primarily to the breakdown of family structures, Hundreds of Thousands of children have been left alone to fend for themselves, mired in poverty and exposed to all kinds and forms of risks and dangers.





**WORTHY PLAN EMPOWERMENT INITIATIVE (WPEI)  
ORGANIZATIONAL PROFILE**

**IN THE NEXT 5 YEARS, WORTHY PLAN  
EMPOWERMENT INITIATIVE WILL IMPROVE  
ON THE FOLLOWING AREAS:**

- Awareness-raising of the work of Worthy Plan Empowerment Initiative related to this activity
- Diversification of funds by establishing an endowment for social welfare activities
- Link child protection programs with sustainable education programs
- Improvement of nutrition and health of the supported children
- Sponsorship for talented and persons with disabilities
- Enhance child protection



# 6

## SUPPORT TO WOMEN & GIRLS

Worthy Plan Empowerment Initiative recognizes the leading role of women in the Nigeria family and society and as pioneers of peace and stability, In periods of natural disaster, civil strife or conflict, Nigeria women play a pivotal role in family welfare and survival; It is through their resiliency, hard-work and strength that millions of people survive in the aftermath of disaster, Due to conflict and natural disasters, many women in Nigeria have become the main breadwinners of their families, Even though women are creative in the ways that they earn income, in general they do not have the skills to expand their businesses further, Women-headed families and children are also among the most vulnerable groups during emergencies.

Worthy Plan Empowerment Initiative has prioritized the empowerment of women and has developed specialized skills-training and income generation programs such as the tailoring, livestock restocking and management of small mills from the time of their inception.

Worthy Plan Empowerment Initiative will continue to support women and girls in order to facilitate their role as productive and proud contributors to their families and communities.





## PEACE-BUILDING & GOVERNANCE

Women in peace-building-Women play a critical role in peace-building initiatives in Nigeria. Worthy Plan Empowerment Initiative's team is working to help strengthen the capacity of rural women's groups, to bring unity amongst all the existing women's groups and help establish an umbrella women's working body to strengthen the voice of women in various locations. A strong women's voice will strengthen the peace process and make it easier to implement the peace accords that are signed with opposing clans and groups.

With the total disintegration of the Nigeria's political and civil infrastructure, people have been left to care for themselves, While the problems are many and complex, Worthy Plan Empowerment Initiative recognizes that many in Northwest and Northeast, and Nigeria share to large degree, many commonalities such as language, religion and shared history, while can be a strong basis upon while to build a new kind of social and political infrastructure.



Worthy Plan Empowerment Initiative is working on the premise that among the key causes of conflicts in Northwest and Northeast are limited access to natural resources such as water, grazing rights, farming land and competing interests over their control. Worthy Plan Empowerment Initiative expects to bridge the gap between the Non-State Actors (NSA) and the local controlling



## **WORTHY PLAN EMPOWERMENT INITIATIVE (WPEI) ORGANIZATIONAL PROFILE**

authority by utilizing project design, the conflict transformation methods, combined with local expertise and resources in the targeted areas. Uniquely designed peace-building projects utilize post-conflict social transformation techniques while at the same time enhancing community development initiatives, awareness and educational programs in nonviolent approaches. The high costs of human loss in conflict spurred Worthy Plan Empowerment Initiative to become engaged in post-conflict transformation and peace-building through joint, inter-clan resource management projects. Worthy Plan Empowerment Initiative's approach to peace-building and conflict management is to focus on quick impact interventions that increase security, and economic activity. These quick impact interventions differ from mainstream development initiatives in that they take place in conflict and post-conflict environments where certain traditional development considerations – such as needs assessments that include extensive consultations with beneficiaries – are counterproductive. This is due to the unstable and under-resourced environments in which the interventions take place. Nigeria's newly liberated areas are characterized by high levels of inter-clan tension and a lack of basic public services. Therefore, Worthy Plan's theory of change is based on working with the local authorities to boost their legitimacy among the communities they serve, further cementing the stabilization effect of the interventions.

Worthy Plan has established effective networks with access to key actors within the Federal Government of Nigeria (FGN), the Nigerians diaspora, civil society, private sector and local and regional administrations. Worthy Plan always identifies and consults with key community stakeholders – clan elders, civil society organizations such as women's and youth groups, and the commercial sector – who represent the interests of the beneficiaries in the community at large. To this end, Worthy Plan has been working with partners within and outside Nigeria, well recognized peace-promoting organizations - and the Nigeria Stability Fund.



# 8

## MENTAL HEALTH AND PSYCHOSOCIAL SUPPORT

Sensitization literally means making people sensitive about an issue, This is the core of awareness raising and is what Worthy Plan Empowerment Initiative ideally want to achieve, to make the people become aware and react to certain issues. The strategies to sensitize people could be draining and challenging but it is one of Worthy Plan Empowerment Initiative objectives and that must be realized.

Worthy Plan Empowerment Initiative have developed strategic measures in improving people knowledge: This means we prioritize efforts geared at informing people about issues and make sure that they have the correct information to truly understand these issues, WPEI want her target audience to think critically about concern issues and actively process information.

Worthy Plan Empowerment Initiative since from time of inception is committed to change people's behavior or attitude towards issues. We explain to them, our audience how new positive behaviors and attitudes will have an impact and maybe even change cultural norms and beliefs.

We also focus on skills: Making sure people have the skills to go with their changed attitudes.

We build social support: people we are sensitizing should know where they can get support, or give support to other people facing the same issue.

Sensitizing through interaction and discussion, challenging myths and correcting misconceptions with convincing arguments and impactful programs, which includes skills building activities, such as role play or other capacity building training through encouraging our audience to build social support network.



# WORTHY PLAN EMPOWERMENT INITIATIVE (WPEI) ORGANIZATIONAL PROFILE





# WORTHY PLAN EMPOWERMENT INITIATIVE (WPEI) ORGANIZATIONAL PROFILE







# WORTHY PLAN EMPOWERMENT INITIATIVE (WPEI) ORGANIZATIONAL PROFILE





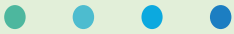
# WORTHY PLAN EMPOWERMENT INITIATIVE (WPEI) ORGANIZATIONAL PROFILE





## WORTHY PLAN EMPOWERMENT INITIATIVE (WPEI) ORGANIZATIONAL PROFILE

In this regard, Worthy Plan intends to support and improve on the following



Conflict sensitivity programming to be integrated with other projects such as water sector etc.



Improve staff capacity for the program by training the staff and employing conflict and governance experts



Inclusion of women, youth and minority clans/groups, engagement of youth, in peace building and governance initiative



Increase program coverage of other regions in Nigeria. The government agencies and Seek more funding for humanitarian services.

DO NOT COPY

## CONTACT



**WorthyPlan**



**<https://www.worthyplan.org>**



**wpei@worthyplan.org**